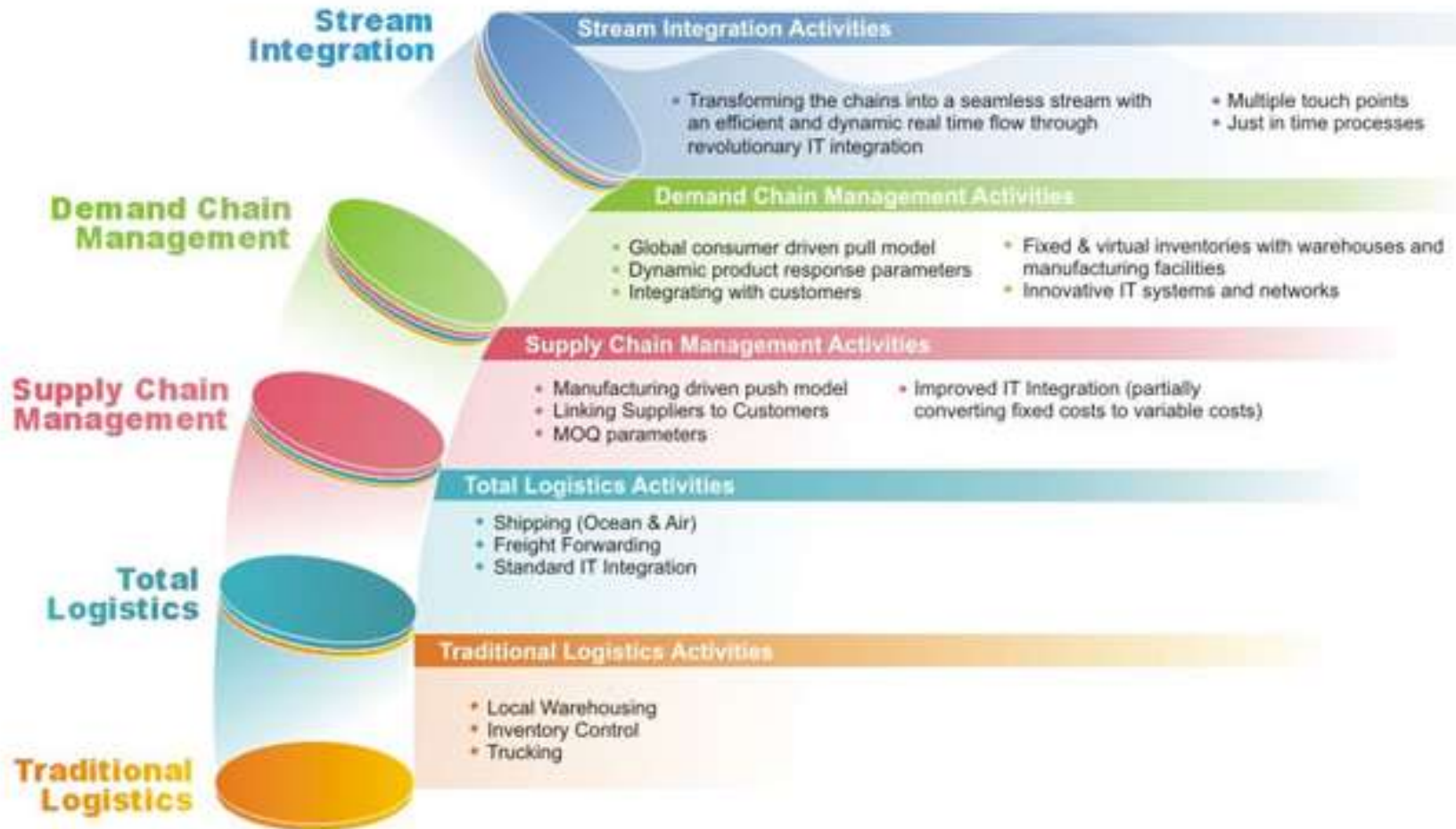




Proposed Evolutionary Path of Deepak



Our goal is to exceed our customers' expectations by ensuring innovation, customization, quality and excellence in every aspect of our business. We do this by providing complete global logistic services, multi-modal transportation and custom services to our customers. By placing emphasis on employee satisfaction, we will ensure our success in market leadership and most importantly customer satisfaction.

Our Strengths

Deepak Group is the symbol of success, a man can achieve with vision and persistence. The saga of Deepak began more than 4 decades ago in 1960 and the visionary was the inimitable Sri **Shivji Virji Dharod**. The responsibility of sustaining the growth and forward integration is continued with great aplomb by **Sri. Girish Dharod and Sri. Karan Dharod** - the able successors of **Sri Shivji Dharod**, further joining by **Sri. Jay Rajpal**. It is their professional style of management and broader outlook that helped **Deepak Group** to take greater strides into new areas.

- ❑ Established in 2012
- ❑ Professionally managed, multi-crore company
- ❑ 50+ years of management experience in the industry
- ❑ [Nationwide network of 2500](#) locations
- ❑ Last mile connectivity
- ❑ Owned and leased fleet of over 400 vehicles covering over 75000 kms daily.
- ❑ Leased, owned and shared warehousing space of 2,00,000 + sq. feet and over 100 locations for warehousing.
- ❑ India's largest Network.
- ❑ Partnered and leased space with Indian Railways and Airlines
- ❑ Partnerships with Regional Logistics Players
- ❑ Exposure to all markets, sectors and industries of the economy with over 5000 customers
- ❑ Over 500 qualified and dedicated skilled and unskilled personnel.
- ❑ ERP integrated processes for efficiency and enhanced value added services.
- ❑ Blue chip clientele.

USP

☐ Cost Effective

We are most cost effective and economical because we use state of the art equipment and infrastructure. 50 years of experience in networking and understanding utility of infrastructure

☐ Dedicated infrastructure for service efficiencies

Our credible stand is to meet out committed delivery schedules backed up by our company owned fleet of vehicles, partnered and leased space with Indian railways and airlines, warehouse's at strategic locations and strategic tie ups with C & F's, freight forwarders and strong liaisoning with govt. bodies and departments.

☐ Customization & Value Addition

We believe in specializing a uniqueness in our services with a personal approach fulfilling the evolving needs of the customer backed up with an extensive understanding and evolved expertise in our infrastructure, internal processes and customer care. With this understanding we have evolved an array of value added services and are adding more to our basket

☐ Credibility

Each member of our team is disciplined, dedicated and professionally trained to provide high end quality service efficiently and effectively to ensure that your possession arrives in peace.

☐ Safety and Protection

Our team has the expertise and is constantly under the training and the performance measure to ensure safety. The equipment used is also specialized to ensure protection and safety to the goods

☐ One of India's largest network

No matter where ever you are using our services, Deepak Group with a network of over 250 branches and 2500 destinations can ensure comprehensive solutions to any destination either in India or overseas .

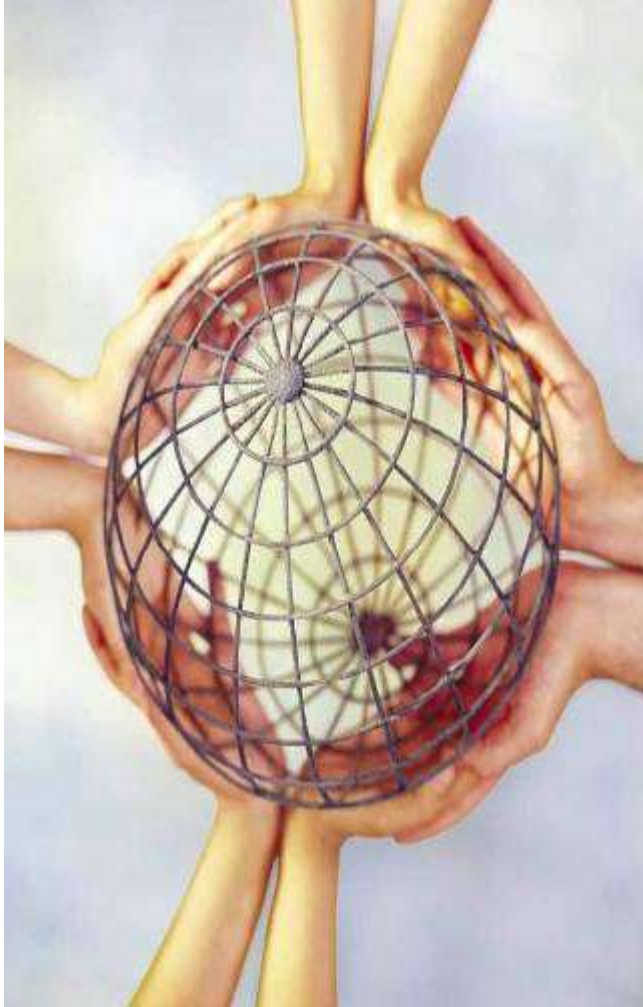
☐ Customer Feedback

We constantly strive to understand the changing needs of the customer and customize our offerings to suit their requirements and bring in maximum customer satisfaction

☐ Constant upgradation of IT and equipment

We constantly strive to incorporate state or the art technology to bring in efficiency, tracking and safety

Type of clientele



© 2017 Deepak Group. All rights reserved.

CORPORATES

WHOLESALE

ASSOCIATIONS

PUBLIC SECTOR UNITS

PHARMACEUTICALS

CEMENT

AUTOMOBILES

TEXTILE

FMCG

CHEMICALS

SMALL BUSINESS HOUSES

TRADERS

DISTRIBUTORS

MANUFACTURING UNITS

GARMENTS

IRON AND STEEL

PAPER MILLS

OIL & LUBRICANTS

HARDWARE & ELECTRICALS

HEALTH CARE

Few of Our Clientele...

Our Clientele

- Wockhardt Ltd
- Navneet Ltd
- R.S Bros Ltd
- Cherma Ltd
- Kumar Shirts
- Johnson & Johnson Ltd
- ONGC
- HPCL
- Thompson
- Bombay dyeing
- GMR
- Dr Reddy Labs
- Aurobindo Pharma
- Anchor Electrical Pvt Ltd
- Anchor Health and beauty
- Carrier Air conditioners
- Himalaya Drugs
- Ranbaxy
- Milton

Our Clientele

- Finolex Cables Ltd
- Bajaj Electricals Ltd
- Precision Wires & Industries Ltd
- Colgate
- J.K.Papers Ltd
- CEAT Ltd
- Reliance Indus.Ltd
- Sanghi Polyester Ltd
- Jindal Ltd
- Landys & Gyr Ltd
- Apar Industries Ltd.
- Nicholas Piramal Ltd
- Repro India Ltd
- Unichem Labs Ltd
- Brooke Bond Tea
- Dabur
- Cello pens
- Price Plastics

Our Clientele

- P & G
- Kirloskar
- Vimal
- Arvind Mills
- Raymonds
- Grasim
- Agrimas Chemicals Ltd
- Wimco Ltd
- Formica India Division
- Cipla Ltd
- VST
- Rupa Garments
- Madura Coats
- Videocon
- Nilkamal
- Many more

Deepak Trans Express

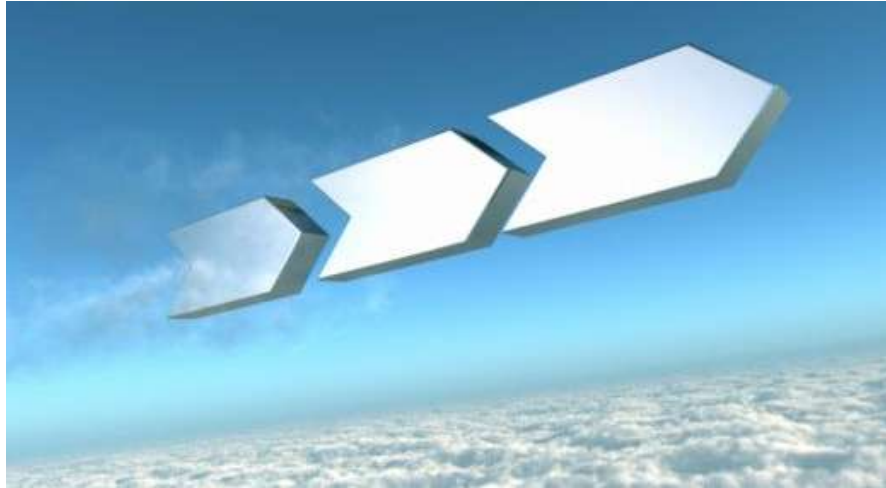
Deepak Transexpress is a vision of innovating the changing requirements of today's logistics and also introducing evolutionary service products to help the customers evolve their supply chain patterns.

The combined strength of the Deepak Group infrastructure built over 5 decades puts together a product that can challenge the existing services and service providers in the market with a steep edge in cost reduction, last mile connectivity, technical and IT efficiencies, operational optimization staying ahead of the times.

Deepak Transexpress is today's local transport and also today's giant redefining complex supply chains



Service offering



SERVICES

CORE SERVICES

Full Truck Load (FTL)

Sundry parcel service (LTL-Less Than
Truck Load)

Express Cargo (All modes)

OTHER SERVICES

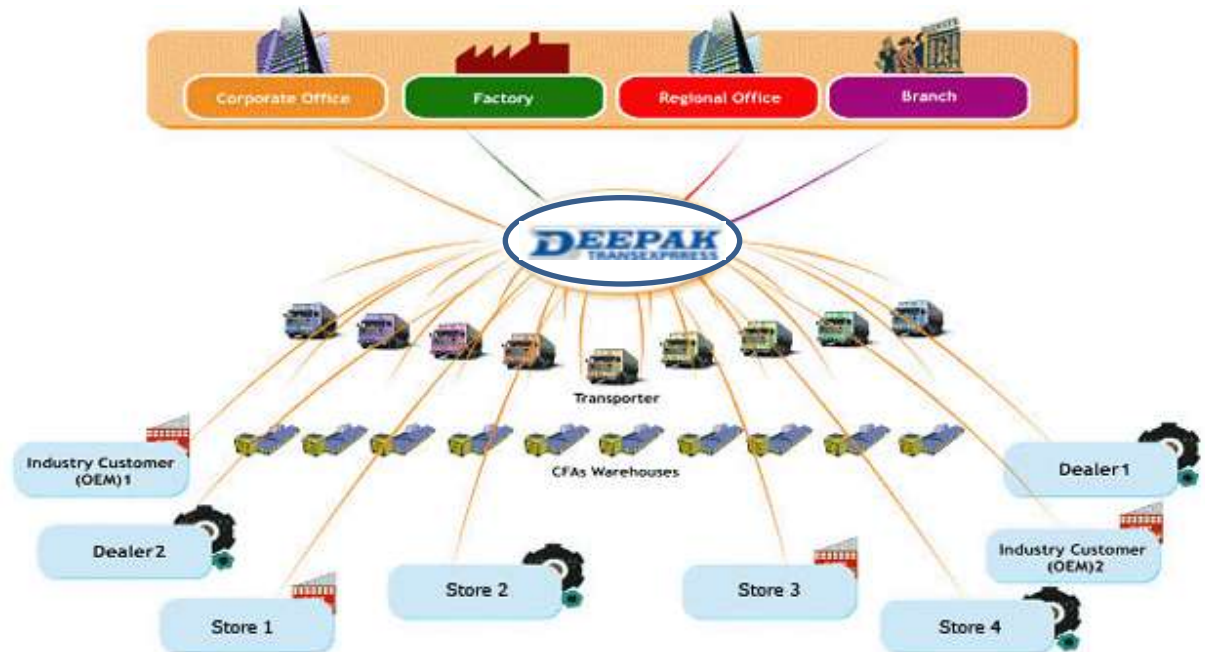
Shipping & Warehousing

Pac – N – Mov services

Supply Chain Management (The Single
Window Approach)

FULL TRUCK LOAD (FTL)

- ❑ More than 2500 locations in India in India for booking and delivery
- ❑ Warehousing space in of more than 20,00,000 sq. ft
- ❑ Trained experts and personnel for operations
- ❑ Door collection and door delivery facilities (Last mile connectivity)
- ❑ Specialized material handling vehicles and equipment
- ❑ 50 years of experience



Express cargo



Details of services

Door collection & Door delivery

Express committed delivery schedules

Storage & Warehousing

International & Domestic movement

Multi Modal Movement

Exceptional customized handling

Insurance covered

Credit facilities

Online tracking

Customs clearance & forwarding

Sundries/ Parcels/ LTL (Less than Truck Load)

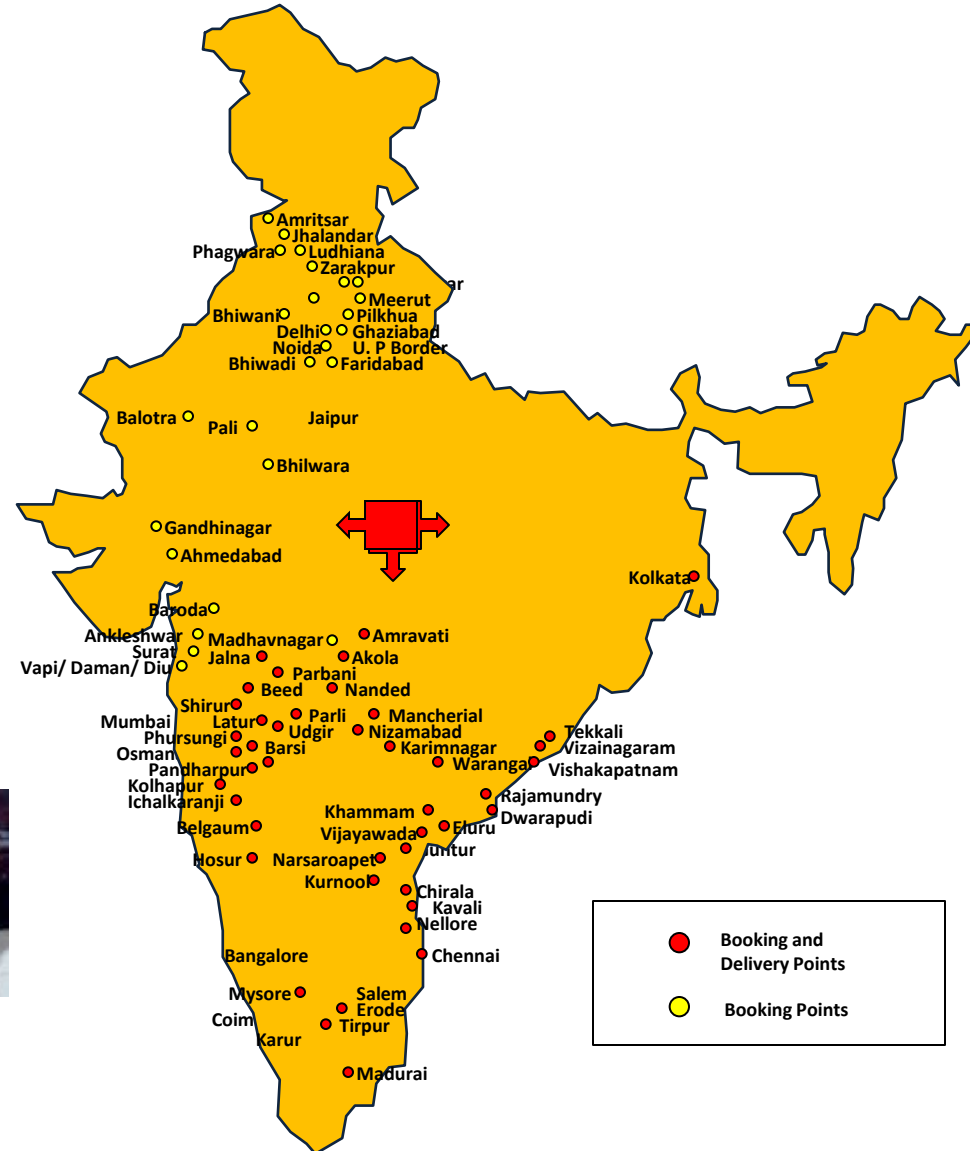


Godown Delivery

Committed Delivery Schedules

Storage and Warehousing

Surface Movement



Shipping & Warehousing



Shipping

Features

- Door collection & Door delivery
- Storage & Warehousing
- Multi Modal Movement
 - Less than container load
 - Full Container load
 - Secure movement
 - Clearing and forwarding

Warehousing

Features

- Flexible hiring options
- Modern racking systems
- Specialized handling equipment
- Order processing and tracking
- Demand chain management

Benefits

- Reduced costs
- Better distribution
- Reduced inhouse activities

Pac N Move



House Hold Packing & Relocation

Corporate / Office Packing & Relocation

Industrial Packing & Relocation

Details of services

Packing, Unpacking & Rearranging

Personal Escort & Loading & Unloading

Storage & Warehousing

International & Domestic movement

Multi modal Movement

Insurance

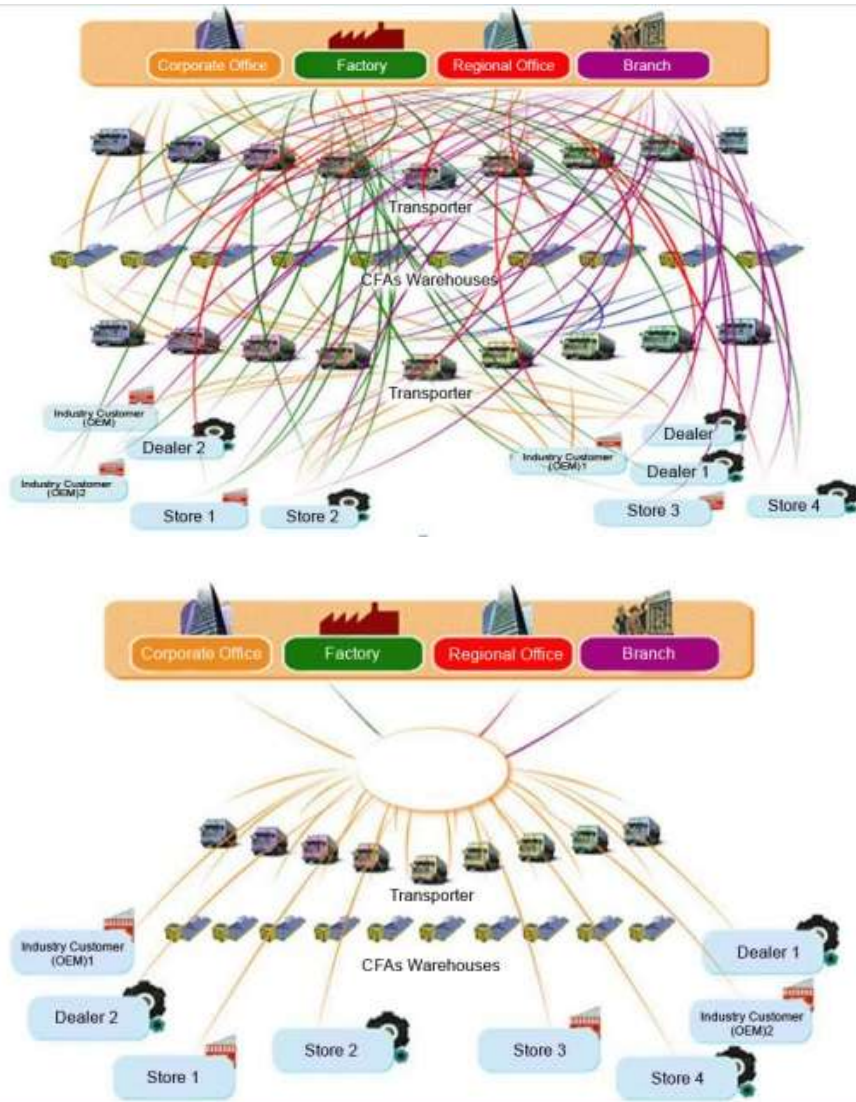
Automobile Relocation

Custom Clearance & Forwarding

Furniture Assembling & Disassembling

Clean Out

SUPPLY CHAIN MANAGMENT



Consulting

- ☐ Supply chain analysis and design
- ☐ Process selection and transformation
- ☐ Process implementation
- ☐ Review costs and benefits

Parameters

- ☐ Transportation decision
- ☐ Location decisions
- ☐ Network designing
- ☐ Inventory and packaging decisions
- ☐ Inbound logistics
- ☐ Outbound logistics
- ☐ Warehousing and order fulfillment
- ☐ Reverse logistics
- ☐ Demand chain management
- ☐ Information and IT management
- ☐ Process implementation
- ☐ Review costs and benefits


Contact



Corporate Office	127/B, Prestige Chambers, Dana bunder, Mumbai – 400009
Customer Care	09029495200
Contact	+91-022-23774058 +91-022-23774235
Fax	+91-022-24161281
Email	crm@deepaktransexpress.com




Thank You



Restriction on disclosure and use of data

The data in this document contains confidential and proprietary information of Deepak Translogistics, the disclosure of which would provide a competitive advantage to others. As a result, this document shall not be disclosed, used or duplicated, in whole or in part, for any purpose other than to evaluate Deepak Group. The data subject to this restriction are contained in the entire document.

This proposal is subject to the satisfactory completion of our customary evaluation of prospective clients. In addition, this proposal is subject to a valid engagement contract signed by both our organizations.